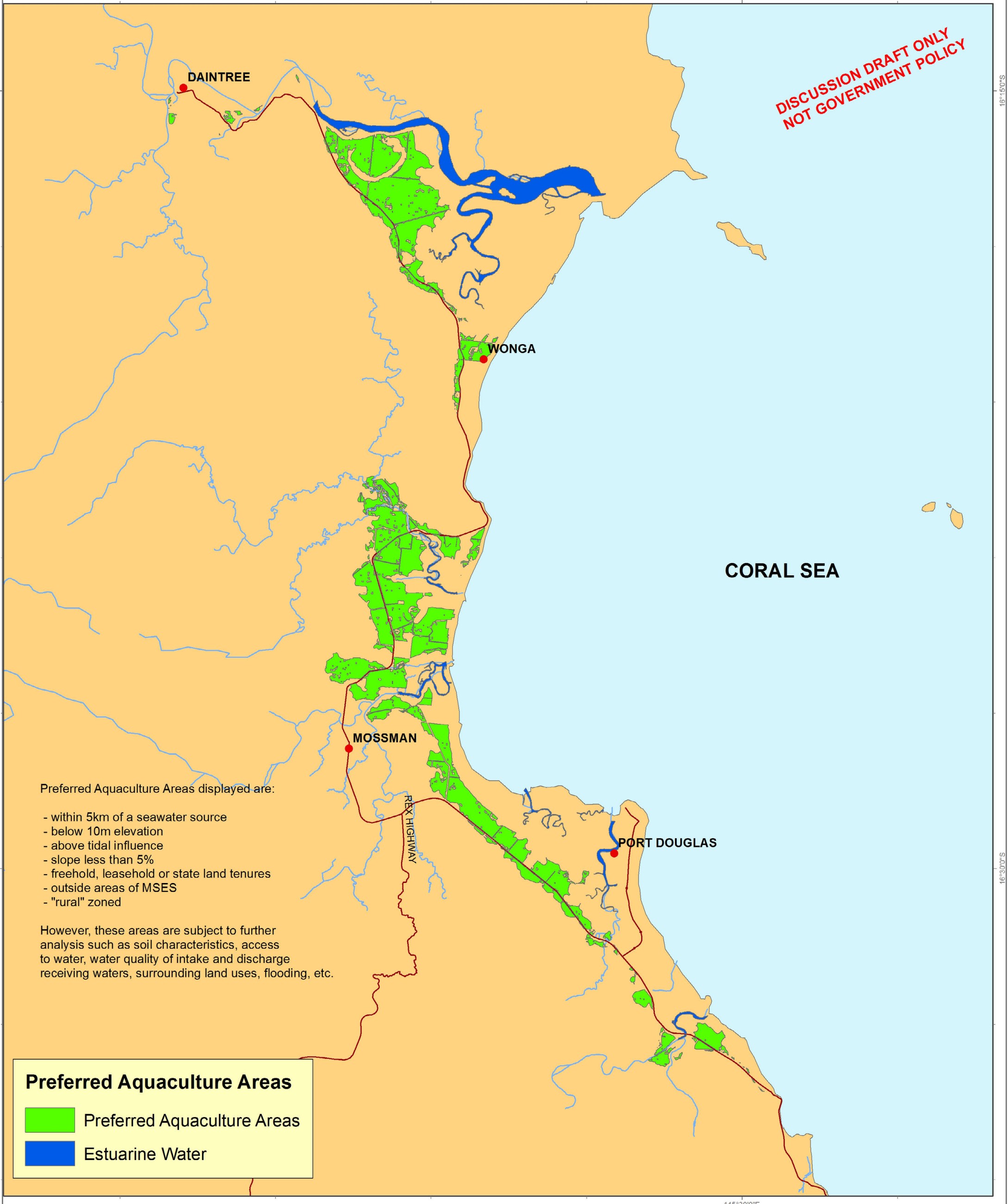


**DISCUSSION DRAFT ONLY  
NOT GOVERNMENT POLICY**





Preferred Aquaculture Areas displayed are:

- within 5km of a seawater source
- below 10m elevation
- above tidal influence
- slope less than 5%
- freehold, leasehold or state land tenures
- outside areas of MSES
- "rural" zoned

However, these areas are subject to further analysis such as soil characteristics, access to water, water quality of intake and discharge receiving waters, surrounding land uses, flooding, etc.

**Preferred Aquaculture Areas**

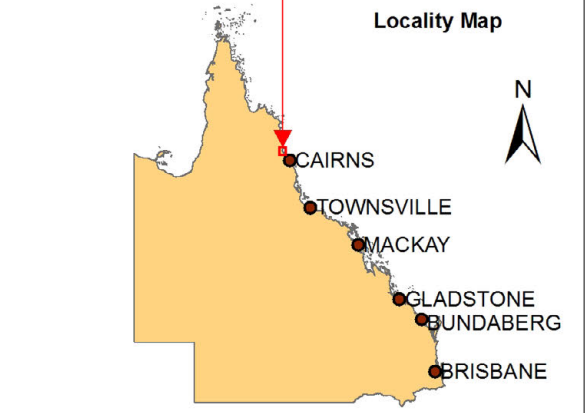
-  Preferred Aquaculture Areas
-  Estuarine Water

Datum : GDA94 Projection : Geographic  
Page Size : A3 Map Date : May 2014

Data Sources under licence from :  
© Geoscience Australia 2014  
© The State of Queensland  
- Department of Agriculture, Fisheries and Forestry 2014  
- Department of Environment and Heritage Protection 2014  
- Department of Natural Resources and Mines  
© The Commonwealth of Australia  
- Department of the Environment 2014

**Disclaimer:** While every care is taken to ensure the accuracy of these data, all data custodians, the State of Queensland and/or the Queensland Competition Authority make no representations or warranties about the accuracy, reliability, completeness or suitability of the mapping products for any particular purpose and disclaim all responsibility and all liability (including without limitation, liability in negligence) for all expenses, losses, damages (including indirect or consequential damage) and costs to which might be incurred as a result of the data being inaccurate or incomplete in any way and for any reason.

This draft aquaculture model is preliminary and is for illustration and discussion purposes only.



### Draft Landbased Coastal Aquaculture Model

**Queensland East Coast  
Daintree - Port Douglas**

