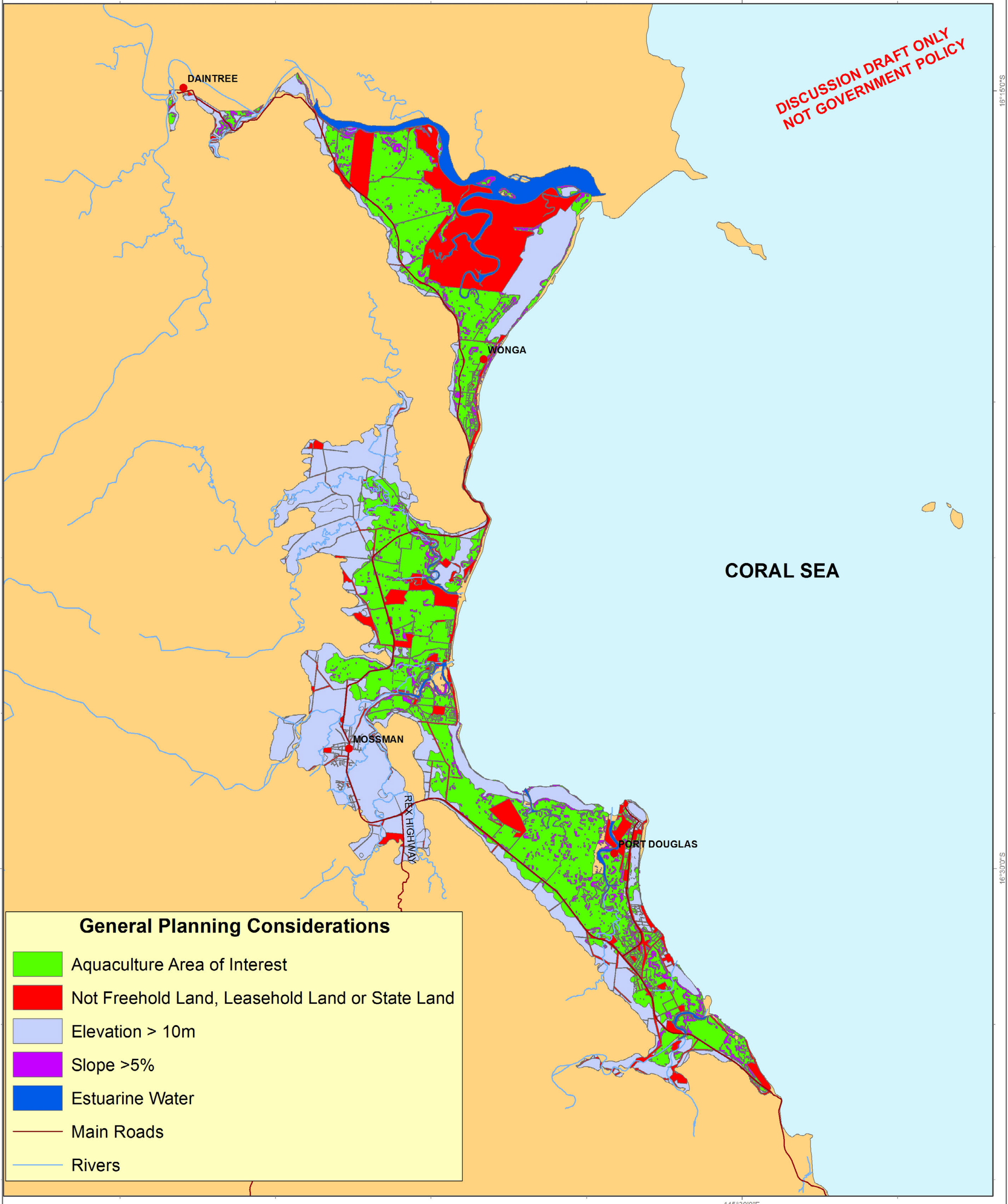



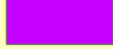





**DISCUSSION DRAFT ONLY
NOT GOVERNMENT POLICY**



General Planning Considerations

-  Aquaculture Area of Interest
-  Not Freehold Land, Leasehold Land or State Land
-  Elevation > 10m
-  Slope >5%
-  Estuarine Water
-  Main Roads
-  Rivers

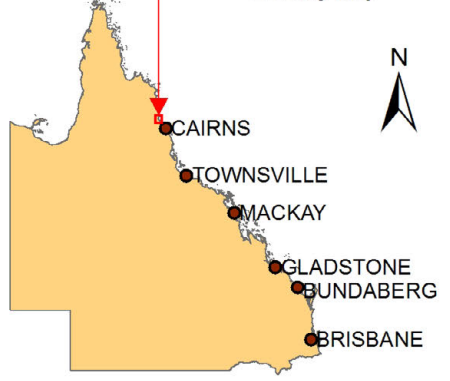
Datum : GDA94 Projection : Geographic
Page Size : A3 Map Date : May 2014

Data Sources under licence from :
© Geoscience Australia 2014
© The State of Queensland
- Department of Agriculture, Fisheries and Forestry 2014
- Department of Environment and Heritage Protection 2014
- Department of Natural Resources and Mines
© The Commonwealth of Australia
- Department of the Environment 2014

Disclaimer: While every care is taken to ensure the accuracy of these data, all data custodians, the State of Queensland and/or the Queensland Competition Authority make no representations or warranties about the accuracy, reliability, completeness or suitability of the mapping products for any particular purpose and disclaim all responsibility and all liability (including without limitation, liability in negligence) for all expenses, losses, damages (including indirect or consequential damage) and costs to which might be incurred as a result of the data being inaccurate or incomplete in any way and for any reason.

This draft aquaculture model is preliminary and is for illustration and discussion purposes only.

Locality Map



Draft Landbased Coastal Aquaculture Model

**Queensland East Coast
Daintree - Port Douglas**

