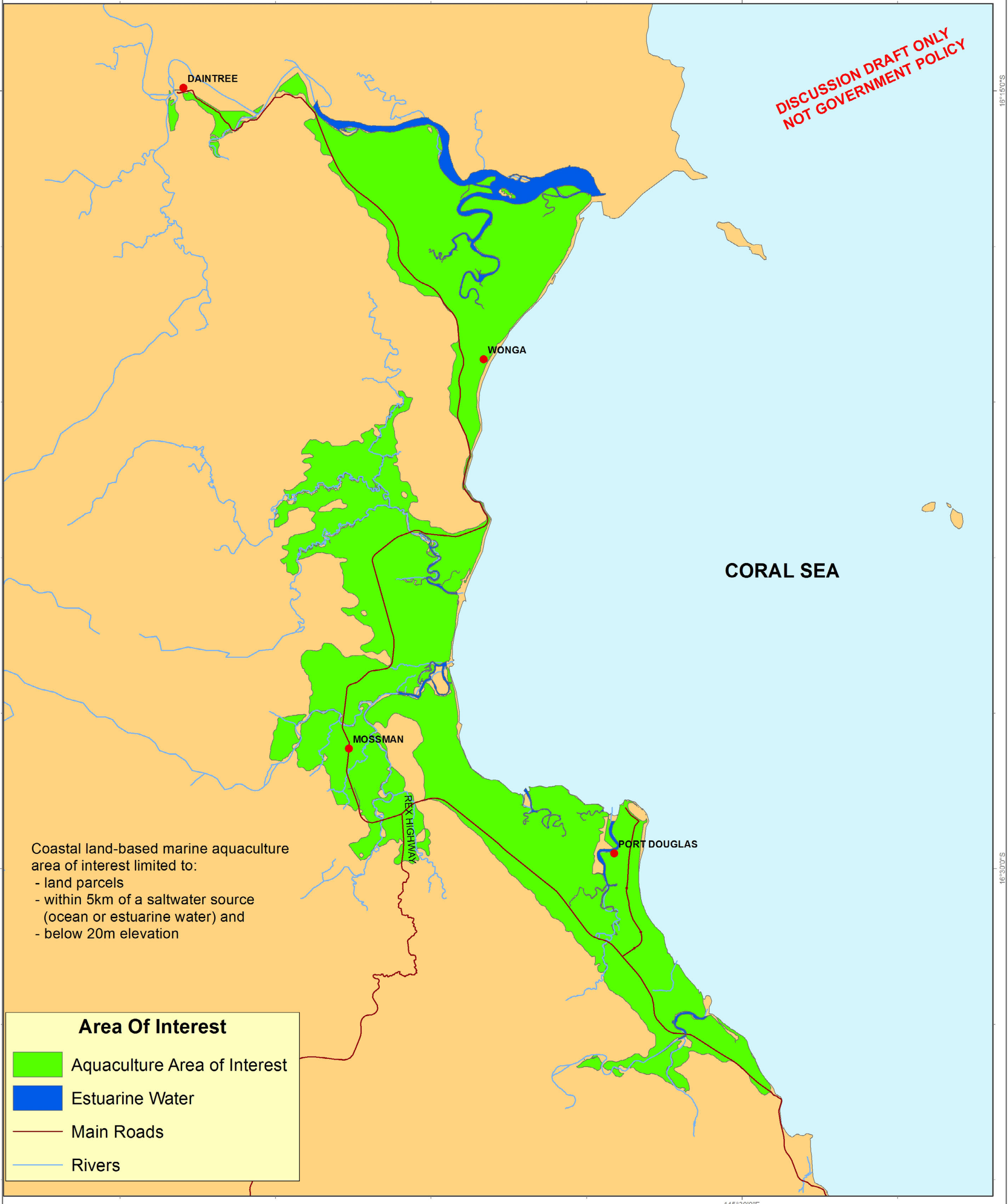


**DISCUSSION DRAFT ONLY
NOT GOVERNMENT POLICY**



Coastal land-based marine aquaculture area of interest limited to:

- land parcels
- within 5km of a saltwater source (ocean or estuarine water) and
- below 20m elevation

Area Of Interest

- Aquaculture Area of Interest
- Estuarine Water
- Main Roads
- Rivers

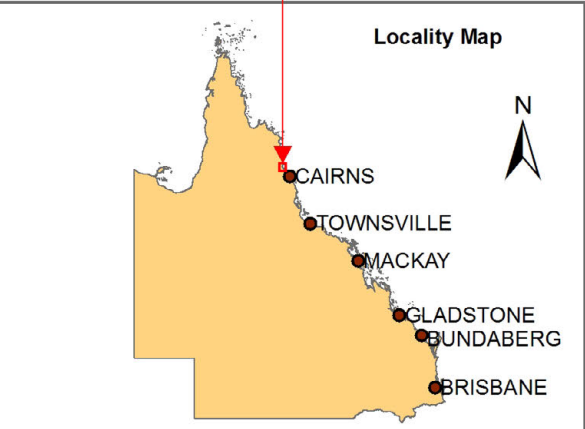
Datum : GDA94 Projection : Geographic
Page Size : A3 Map Date : May 2014

Data Sources under licence from :

- Geoscience Australia 2014
- The State of Queensland
 - Department of Agriculture, Fisheries and Forestry 2014
 - Department of Environment and Heritage Protection 2014
 - Department of Natural Resources and Mines
- The Commonwealth of Australia
 - Department of the Environment 2014

Disclaimer: While every care is taken to ensure the accuracy of these data, all data custodians, the State of Queensland and/or the Queensland Competition Authority make no representations or warranties about the accuracy, reliability, completeness or suitability of the mapping products for any particular purpose and disclaim all responsibility and all liability (including without limitation, liability in negligence) for all expenses, losses, damages (including indirect or consequential damage) and costs to which might be incurred as a result of the data being inaccurate or incomplete in any way and for any reason.

This draft aquaculture model is preliminary and is for illustration and discussion purposes only.



Draft Landbased Coastal Aquaculture Model

**Queensland East Coast
Daintree - Port Douglas**

